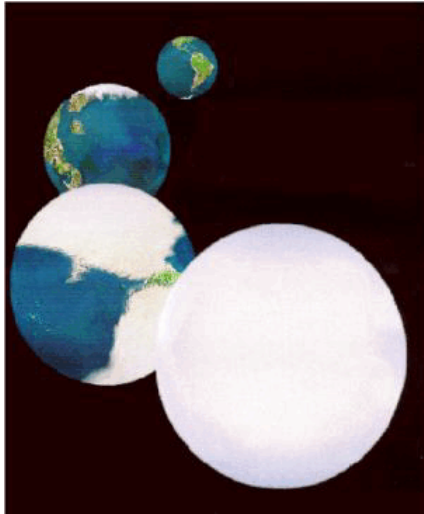
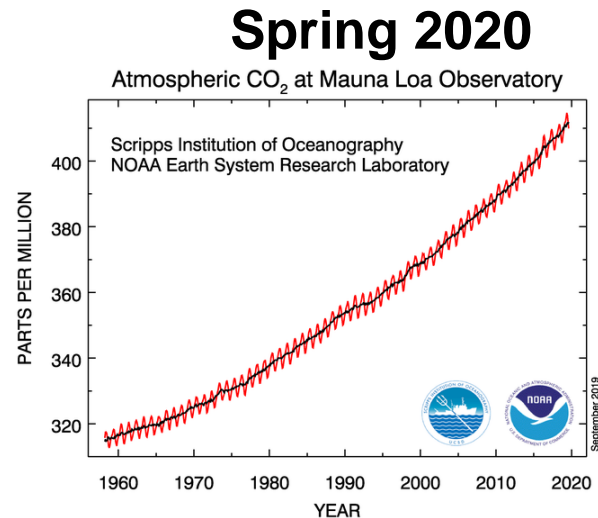


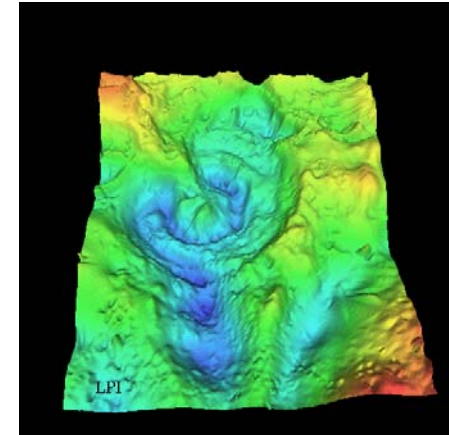
Global Climate Change



“Snowball Earth” episode
(700 million years ago).



Current growth of CO₂ in the atmosphere.



The magnetic field anomaly produced
by the crater of the end-Cretaceous
asteroid impact off Yucatan.

This course surveys the natural and anthropogenic factors that have caused the Earth's climate to change over the past 700 million years. Topics include: how scientists study past climates, the causes and evidence for climate changes, how ecosystems respond to climate change, and how climate change impacts humans and culture. We will also discuss how human-produced climate change can be distinguished from a background of natural climate trends.

This course is elemental for understanding the history of climate change on our planet.

GEOG 3210/5210 Tuesday & Thursday 2:00 - 3:20 PM



Earth's cryosphere during the last glacial
maximum (15,000 years ago).